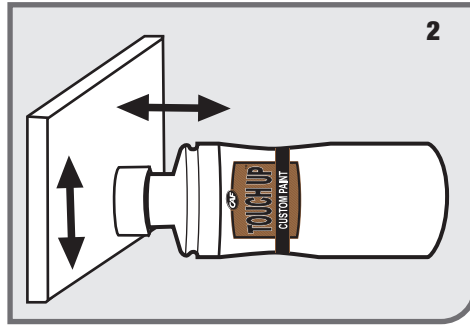
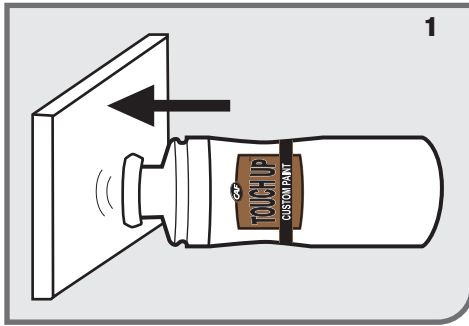




# PAINTING INSTRUCTIONS



## SURFACE PREPARATION:

Clean and remove all debris, dust and dirt from surface before applying paint.

## APPLICATION

1. Always pretest color match of this product on a small, inconspicuous area before use.
2. Press the sponge applicator against surface to be painted and squeeze bottle to start flow of paint.
3. Apply paint evenly, using a dabbing motion.
4. For best results, apply multiple, thin coats, allowing sufficient dry time between coats.

## AFTER USE

5. Rinse applicator, and use a disposable towel to soak up water remaining in sponge. Secure cap for storage.

## USES

- Masonry
- Concrete
- Steel
- Stucco
- Wood
- and more...

## FREQUENCY

As needed

## TASK DURATION

Depends on amount of surface coverage required for painting and how extensive the damage may be. Estimated 5-10 mins.



HAVE QUESTIONS? NEED TRAINING?  
WE'RE HERE TO HELP!



Visit [www.mycaf.com](http://www.mycaf.com) for additional product information, SDS, training materials, product videos and more.

<b>QUICK AND EASY</b>	
<b>2.3 FL OZ (68 mL)</b>	<b>100 APPLICATIONS</b>

